

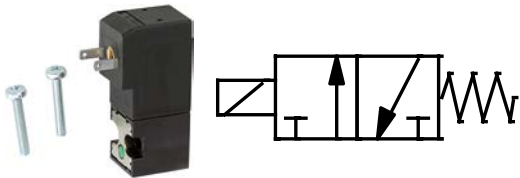
3/2-way mini solenoid valve

3/2-way type

PLUS ||

Art. No. 106643

Type No. MV 1051.3



Exemplary illustration

Directly controlled 3/2-way solenoid valves specially designed for pneumatic applications. These valves are provided with a flange for assembly on an individual base or multiple manifold base. They feature a monostable manual operator. The scope of supply includes two fixing bolts and a flange gasket. The coils can be turned 180°.

Technical data

| | |
|--------------------------------------|---|
| Operating pressure | 0 - 7 bar |
| Temperature range | -10 to 50 °C |
| Material | Plastic |
| Sealant | NBR, stainless steel |
| Type of construction | directly controlled |
| Connection | For plug connector |
| Function | 3/2 NC |
| Operation | electric with manual control |
| Plate on manual operator | Silver |
| Applications | For assembly on manifold base |
| Manual control | non-latching |
| Medium | Filtered, unlubricated compressed air |
| Nominal Ø | 1.5 mm |
| Flow rate | QN (p1 = 6 bar, Δp = 1 bar) = 50 NI/min |
| Switching frequency | max. 2400/min |
| Lifetime | 50 million switching operations |
| Voltage | 24 V DC |
| Voltage fluctuation max. permissible | -5% / +10% |
| Protection IP | IP 00 (without attached plug connector) IP 65 (with correct attached plug connector) |
| Power input | 2.5 W |
| Opening and closing times | 10 to 12 ms (depending on pressure) |
| Width | 15.0 mm |
| Height | 42.0 mm |

Important: The scope of supply does not include a connector. Please order separately.

Commercial data

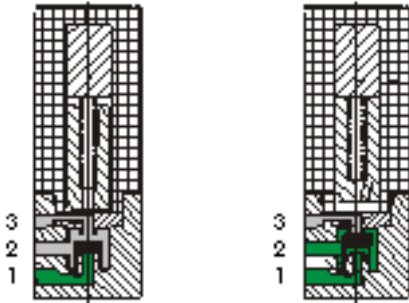
| | |
|-------------------------|-----------------|
| Customs tariff number | 84812090 |
| Country of origin | IT |
| eCl@ss 5.1.4 | 27220601 |
| eCl@ss 9.0 | 27220601 |
| UNSPSC_Code_v190501 | 40141605 |
| UNSPSC_CodeDesc_v190501 | Solenoid valves |

Materials

| Part | Material |
|-----------------------------|-----------------|
| Body | PA |
| Seals | NBR |
| Manifold base conn. surface | Stainless steel |
| Fastener | Aluminium |
| Manifold base | Aluminium |

Function diagram

3/2 NC



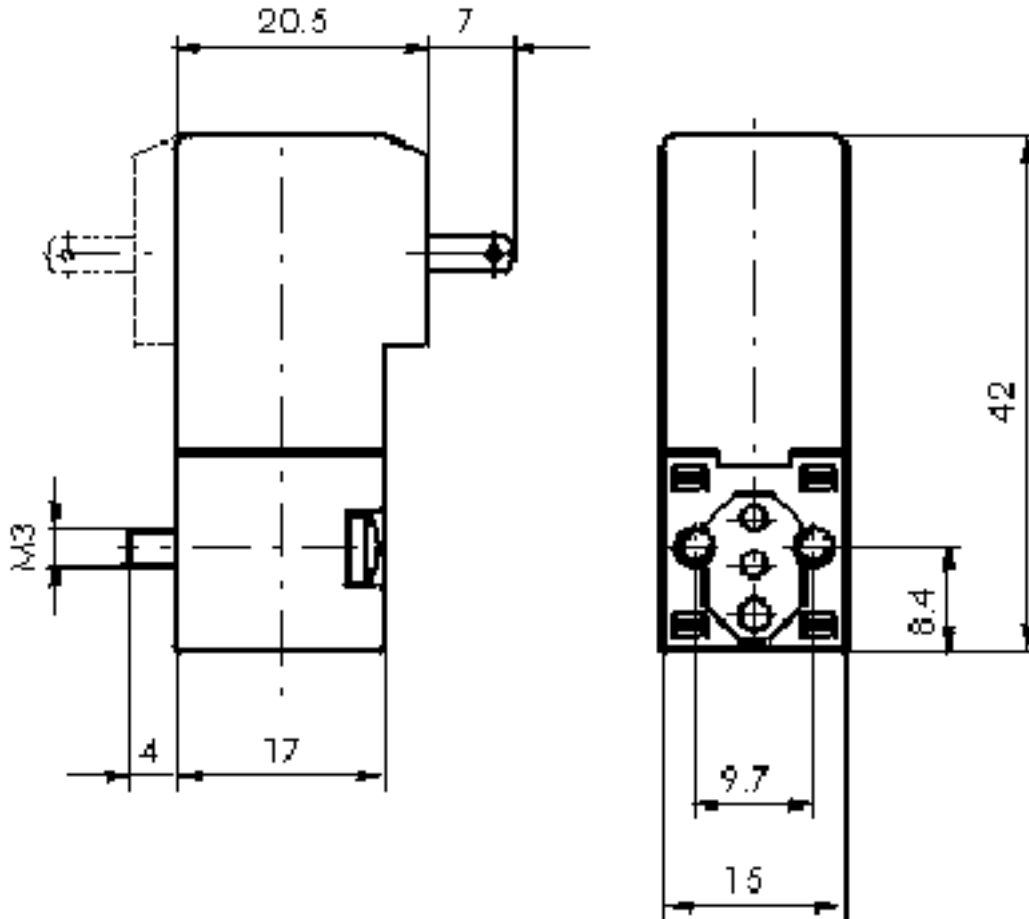
Position 1
(normal position)

Position 2

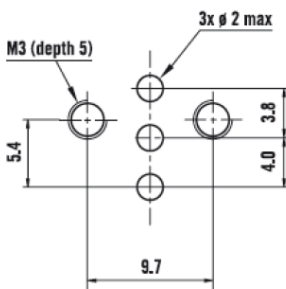
| | |
|---|----------------|
| 1 | Pressure input |
| 2 | Application |
| 3 | Exhaust air |

Dimensions

Plug connection (linear)



Connection geometry



Accessories

| | Art. No. | Type No. |
|---|-----------------|-----------------|
| Multiple manifold base, 2-ports, M5 | 106651 | 1099.02 |
| Multiple manifold base, 3 ports, M5 | 106652 | 1099.03 |
| Multiple manifold base, 4 ports, M5 | 106653 | 1099.04 |
| Multiple manifold base, 5 ports, M5 | 106654 | 1099.05 |
| Multiple manifold base, 6 ports, M5 | 106655 | 1099.06 |
| Multiple manifold base, 7 ports, M5 | 106656 | 1099.07 |
| Multiple manifold base, 8 ports, M5 | 106657 | 1099.08 |
| Multiple manifold base, 9 ports, M5 | 106658 | 1099.09 |
| Multiple manifold base, 10 ports, M5 | 106659 | 1099.10 |
| Plug conn. f. mini solenoid valve, PG 9 type C, DIN 43650 C | 106660 | 1051.300 |