

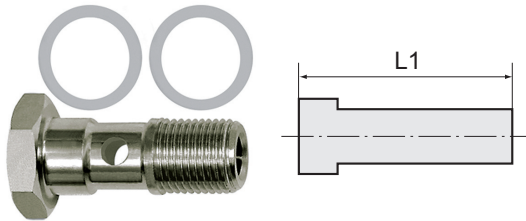
# Hollow screw

stainless steel

## STAINLESS STEEL

Art. No. 110446

Type No. 60.038 ES



Exemplary illustration

For use with aggressive media and in areas susceptible to corrosive outside influences, in the food processing industry and in hygienic and sanitary applications.

## Technical data

Working pressure	max. 15 bar
Working pressure pulsate	10 bar
Operating temperature	-20 to 150 °C
Medium temperature	-20 to 150 °C
Material	Stainless steel 1.4404
Sealant	PTFE
Standard thread	DIN EN ISO 228-1
Version	Single
Thread	G 3/8
L1	36.0 mm
a/f	21 mm
Suitable pipe materials	PVDF, PTFE, PA, PU

The maximum working pressure depends on the pipe quality.

The medium and operating temperature depends on the pipe quality and diameter.

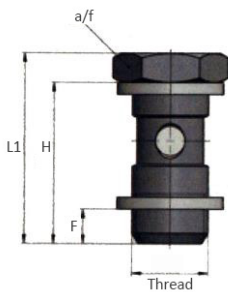
## Commercial data

Customs tariff number	73071990
Country of origin	IT
eCl@ss 5.1.4	27294201
eCl@ss 9.0	27294201
UNSPSC_Code_v190501	27131613
UNSPSC_CodeDesc_v190501	Air coupling

## Material informations

REACH SVHC1 substance name	no
CAS no. SVHC 1	no CAS No.
RoHS materials notice	RoHS compliant
REACH Info	no SVHC substance included

## Dimensions



Thread	Standard thread	H mm	F mm	a/f mm	L1 mm
G 3/8	DIN EN ISO 228-1	30.0	7.0	21	36.0