

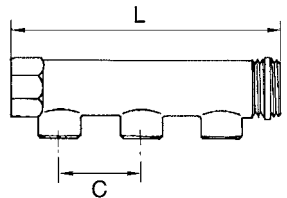
Distributor pipe

brass



Art. No. 112575

Type No. VT 1328



Exemplary illustration

For assembling compressed air taps.

End fittings with 1 x male and 1 x female thread, outlets optionally with male or female thread.

Technical data

Max. operating pressure	10 bar
Material	bright brass
Sealant	PTFE
Inlet thread	G 1 IT
Connection	4
Connecting thread	G 1/2 IT
Through-hole thread	G 1 ET
Version	incl. sealing ring ET
Tube O.D.	31 mm
L	213.0 mm
C	50.0 mm

Commercial data

Customs tariff number	84818099
Country of origin	IT
eCl@ss 5.1.4	27294206
eCl@ss 9.0	27294206
UNSPSC_Code_v190501	27131601
UNSPSC_CodeDesc_v190501	Air manifolds

Material informations

REACH SVHC1 substance name	lead
CAS no. SVHC 1	7439-92-1
RoHS materials notice	RoHS compliant
REACH Info	contains SVHC substance

Product informations

Version

- heavy cast brass
- infinitely extendable
- male thread of main pipe with self-sealing PTFE gasket

Applications

- heating systems
- domestic water supplies
- compressed air supplies, max. 10 bar
- neutral, non-toxic, gaseous and liquid media
- NO drinking water approved