

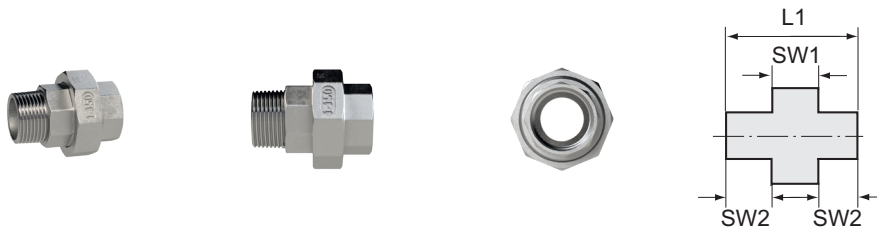
# Removable double threaded nipple

Stainless steel 1.4408

## STAINLESS STEEL

Art. No. 118224

Type No. LDG NR1ES4408FDIA



Exemplary illustration

## Technical data

Max. working pressure	20 bar
Sealant	Flat sealing PTFE
Thread	Rp/R 1
L1	68.8 mm
a/f 1	54 mm
a/f 2	39 mm
Thread form	parallel female thread and tapered male thread
Standard thread	DIN EN ISO 7-1

From thread size of 1 inch, we recommend using an adjustable open-end wrench.

To ensure a proper sealing of the cylindrical threads (G) and tapered threads (R/Rp) we recommend using a suitable sealant (e.g. hemp, sealing tape or suitable industrial adhesive).

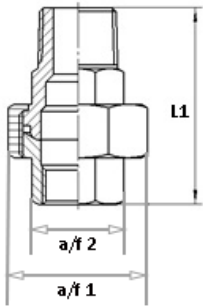
## Commercial data

Customs tariff number	73072910
Country of origin	CN
eCl@ss 5.1.4	22360606
eCl@ss 9.0	22560206
UNSPSC_Code_v190501	40173303
UNSPSC_CodeDesc_v190501	Stainless steel pipe nipple

## Material informations

REACH SVHC1 substance name	no
CAS no. SVHC 1	no CAS No.
RoHS materials notice	RoHS compliant
REACH Info	no SVHC substance included

## Dimensions



Thread	L1 mm	a/f 1 mm	a/f 2 mm
Rp/R 1	68.8	54	39

From thread size of 1 inch, we recommend using an adjustable open-end wrench.

To ensure a proper sealing of the cylindrical threads (G) and tapered threads (R/Rp) we recommend using a suitable sealant (e.g. hemp, sealing tape or suitable industrial adhesive).

## Spareparts

	Art. No.	Type No.
Flat seal made of PTFE size 5	119467	FDT5