

Reducing nipple

Stainless steel 1.4408

STAINLESS STEEL

Art. No. 118414

Type No. REDNR3814ES4408



Exemplary illustration

Technical data

| | |
|-----------------------|--|
| Max. working pressure | 20 bar |
| Male thread | R 3/8 |
| Female thread | Rp 1/4 |
| L1 | 16.0 mm |
| a/f | 18 mm |
| Thread form | tapered male thread and parallel female thread |
| Standard thread | DIN EN ISO 7-1 |
| Version | Hexagonal |

From thread size of 1 inch, we recommend using an adjustable open-end wrench.

To ensure a proper sealing of the cylindrical threads (G) and tapered threads (R/Rp) we recommend using a suitable sealant (e.g. hemp, sealing tape or suitable industrial adhesive).

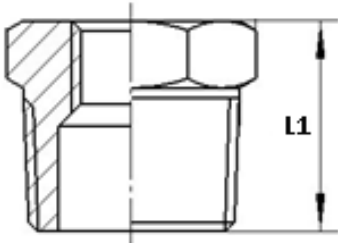
Commercial data

| | |
|-------------------------|-----------------------------|
| Customs tariff number | 73072910 |
| Country of origin | CN |
| eCl@ss 5.1.4 | 22360606 |
| eCl@ss 9.0 | 22560206 |
| UNSPSC_Code_v190501 | 40173303 |
| UNSPSC_CodeDesc_v190501 | Stainless steel pipe nipple |

Material informations

| | |
|----------------------------|----------------------------|
| REACH SVHC1 substance name | no |
| CAS no. SVHC 1 | no CAS No. |
| RoHS materials notice | RoHS compliant |
| REACH Info | no SVHC substance included |

Dimensions



| Male thread | Female thread | L1 | a/f |
|-------------|---------------|------|-----|
| | | mm | mm |
| R 3/8 | Rp 1/4 | 16.0 | 18 |

From thread size of 1 inch, we recommend using an adjustable open-end wrench.

To ensure a proper sealing of the cylindrical threads (G) and tapered threads (R/Rp) we recommend using a suitable sealant (e.g. hemp, sealing tape or suitable industrial adhesive).