

# Reducing nipple

Stainless steel 1.4408

**STAINLESS STEEL**

Art. No. 118487

Type No. REDNR1141ES4408



Exemplary illustration

## Technical data

|                       |  |
|-----------------------|--|
| Max. working pressure | 20 bar   |
| Male thread           | R 1 1/4  |
| Female thread         | Rp 1   |
| L1                    | 27.0 mm  |
| a/f                   | 43 mm  |
| Thread form           | tapered male thread and parallel female thread |
| Standard thread       | DIN EN ISO 7-1                                 |
| Version               | Octagonal                                      |

From thread size of 1 inch, we recommend using an adjustable open-end wrench.

To ensure a proper sealing of the cylindrical threads (G) and tapered threads (R/Rp) we recommend using a suitable sealant (e.g. hemp, sealing tape or suitable industrial adhesive).

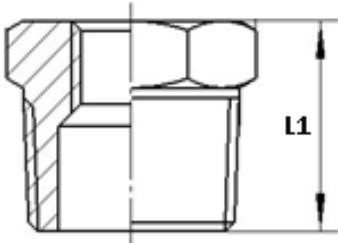
## Commercial data

|                         |                             |
|-------------------------|-----------------------------|
| Customs tariff number   | 73072910                    |
| Country of origin       | CN                          |
| eCl@ss 5.1.4            | 22360606                    |
| eCl@ss 9.0              | 22560206                    |
| UNSPSC_Code_v190501     | 40173303                    |
| UNSPSC_CodeDesc_v190501 | Stainless steel pipe nipple |

## Material informations

|                            |                            |
|----------------------------|----------------------------|
| REACH SVHC1 substance name | no                         |
| CAS no. SVHC 1             | no CAS No.                 |
| RoHS materials notice      | RoHS compliant             |
| REACH Info                 | no SVHC substance included |

## Dimensions



| Male thread | Female thread | L1   | a/f |
|-------------|---------------|------|-----|
|             |               | mm   | mm  |
| R 1 1/4     | Rp 1          | 27.0 | 43  |

From thread size of 1 inch, we recommend using an adjustable open-end wrench.

To ensure a proper sealing of the cylindrical threads (G) and tapered threads (R/Rp) we recommend using a suitable sealant (e.g. hemp, sealing tape or suitable industrial adhesive).