

Reducing sleeve

Stainless steel 1.4408

STAINLESS STEEL

Art. No. 119152

Type No. REDMG1214ES4408



Exemplary illustration

Technical data

Max. working pressure	20 bar
Female thread 1	G 1/2
Female thread 2	G 1/4
L1	25.0 mm
Thread form	parallel female thread
Standard thread	DIN EN ISO 228-1
Version	round

From thread size of 1 inch, we recommend using an adjustable open-end wrench.

To ensure a proper sealing of the cylindrical threads (G) and tapered threads (R/Rp) we recommend using a suitable sealant (e.g. hemp, sealing tape or suitable industrial adhesive).

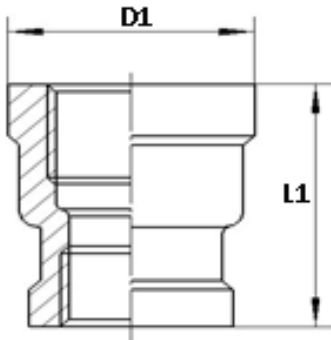
Commercial data

Customs tariff number	73072210
Country of origin	CN
eCl@ss 5.1.4	22360605
eCl@ss 9.0	22560205
UNSPSC_Code_v190501	40172607
UNSPSC_CodeDesc_v190501	Stainless steel pipe coupling

Material informations

REACH SVHC1 substance name	no
CAS no. SVHC 1	no CAS No.
RoHS materials notice	RoHS compliant
REACH Info	no SVHC substance included

Dimensions



Female thread 1	Female thread 2	L1	D1
		mm	mm
G 1/2	G 1/4	25.0	26.0

From thread size of 1 inch, we recommend using an adjustable open-end wrench.

To ensure a proper sealing of the cylindrical threads (G) and tapered threads (R/Rp) we recommend using a suitable sealant (e.g. hemp, sealing tape or suitable industrial adhesive).