

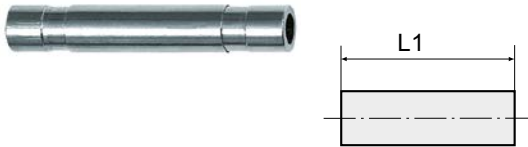
## Plug nipple

»metallica« series

**PLUS**

Art. No. 142793

Type No. 8865.012



Exemplary illustration

All parts with a parallel thread are supplied with an FPM O-ring while the conical threads are coated with preCOTE 5 dispersion, all fittings in this series can thus also be used at high temperatures (medium compressed air).

Only recommended for use in combination with quick connectors of the »metallica« series. Suitability testing for use with other series is the responsibility of the user.

### Technical data

Working pressure	-0.98 - 16 bar
Operating temperature	-20 to 80 °C
Series	metallica
Material	Nickel-plated brass
Medium	Compressed air
Applications	Compressed air systems, welding technology, vacuum
For tube O.D.	12 mm
L1	48.0 mm

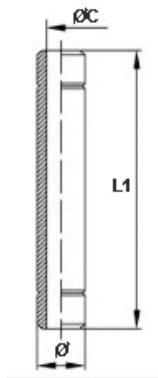
### Commercial data

Customs tariff number	74122000
Country of origin	IT
eCl@ss 5.1.4	27294201
eCl@ss 9.0	27294201
UNSPSC_Code_v190501	27131613
UNSPSC_CodeDesc_v190501	Air coupling

## Material informations

REACH SVHC1 substance name	lead
CAS no. SVHC 1	7439-92-1
RoHS materials notice	RoHS compliant
REACH Info	contains SVHC substance

## Dimensions



For tube O.D.	Ø C	L1
mm	mm	mm
12	10.0	48.0