

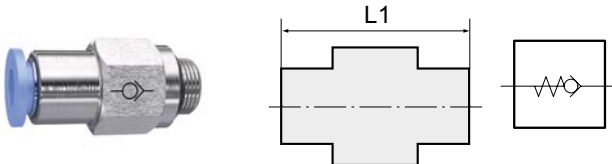
Straight check valve

»blue series«

EASY

Art. No. 151496

Type No. 200.3810-2



Exemplary illustration

The non-return function of these push-in fittings prevents the air from flowing back, the unidirectional design means air flow is only possible in one direction.

Technical data

Working pressure	0 - 10 bar
Min. opening pressure	0.2 bar
Temperature range	0 to 60 °C
Series	Blue series
Material	Plastic and nickel-plated brass
Medium	Compressed air
Sealant	NBR
Sleeve	Plastic blue
Applications	Compressed air systems
Recommended hose	PU or PA (nylon)
Flow direction	From port to tube
Thread form	Parallel male thread
Standard thread	DIN EN ISO 228-1
Version	With o-ring (NBR)
Thread	G 3/8
For tube O.D.	10 mm
L1	41.0 mm
a/f	20 mm

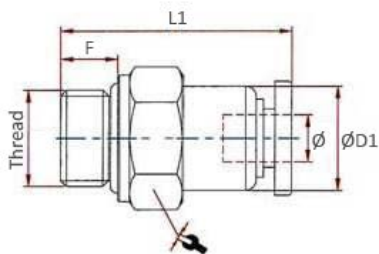
The suitability test for the use with alternative specifications is the user's responsibility.

Note on the sealing effect of check valves: The pressure prevailing on the outlet side supports the shut-off components. A minimum pressure of 1.3 bar (hose connection 4-8 mm) and 2 bar (hose connection 10-12 mm) is required to prevent backflow.

Commercial data

Customs tariff number	84813099
Country of origin	CN
eCl@ss 5.1.4	27292001
eCl@ss 9.0	27292001
UNSPSC_Code_v190501	40141603
UNSPSC_CodeDesc_v190501	Pneumatic valves

Dimensions



Thread	Standard thread	For tube O.D.	F	a/f	L1	D1
		mm	mm	mm	mm	mm
G 3/8	DIN EN ISO 228-1	10	7.5	20	41.0	17.0

Accessories

	Art. No.	Type No.
Loosening tool, quick-connect fittings, hose exterior Ø 3 - 10 mm	108853	LW3-10
Loosening tool, quick-connect fittings, hose exterior Ø 4-14 mm	121863	LW4-14