



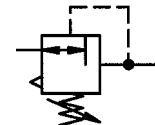
Pressure regulator

Size 5

637.75 to 637.88

G 1½ (red.)

G 2

 0.5 to 6 bar
 0.5 to 10 bar
 0.5 to 16 bar
 0.5 to 25 bar


Characteristics

Article No.	637.85	637.86	637.87	637.88
Ident No.	101140	101141	101142	101143
Port	G 2			
Article No.	637.75	637.76	637.77	637.78
Ident No.	101136	101137	101138	101139
Port	G 1½ (reduced)			
Pressure gauge port	G 1/4			
Type of construction	Diaphragm pressure regulator with self-relieving design - Pilot-controlled Special versions on request e.g. - Reverse flow port closed			
Max. input pressure p ₁	40 bar			
Control range p ₂	0.5 to 6 bar / 0.5 to 10 bar / 0.5 to 16 bar / 0.5 to 25 bar			
Mounting position	Any / note direction of arrow			
Mounting type	Mounting bracket on body (mounting bracket, four screws)			
Medium temperature	-10 to 90 °C			
Ambient temperature	-10 to 90 °C			
Weight [g]	6480 / 6650 with pressure gauge			

Description

- Regulator in block design
- Double nipples (G 2) required for block mounting with other devices
- Pressure setting can be locked by pushing the knob down
- Flow direction indicated by arrows
- **Entry in direction of arrow**
- Working pressure remains virtually **constant, regardless** of system pressure fluctuations and air consumption
- Separate pressure gauges for input and output pressure included, can be mounted at both ends
- Wall mounting with mounting bracket and screws on body

Accessories

Designation	Article No.	Ident No.
Mounting bracket with 4 screws	H 805	101144
Double nipple G 1½	252.07/4	100920
Double nipple G 2	252.07/5	101145

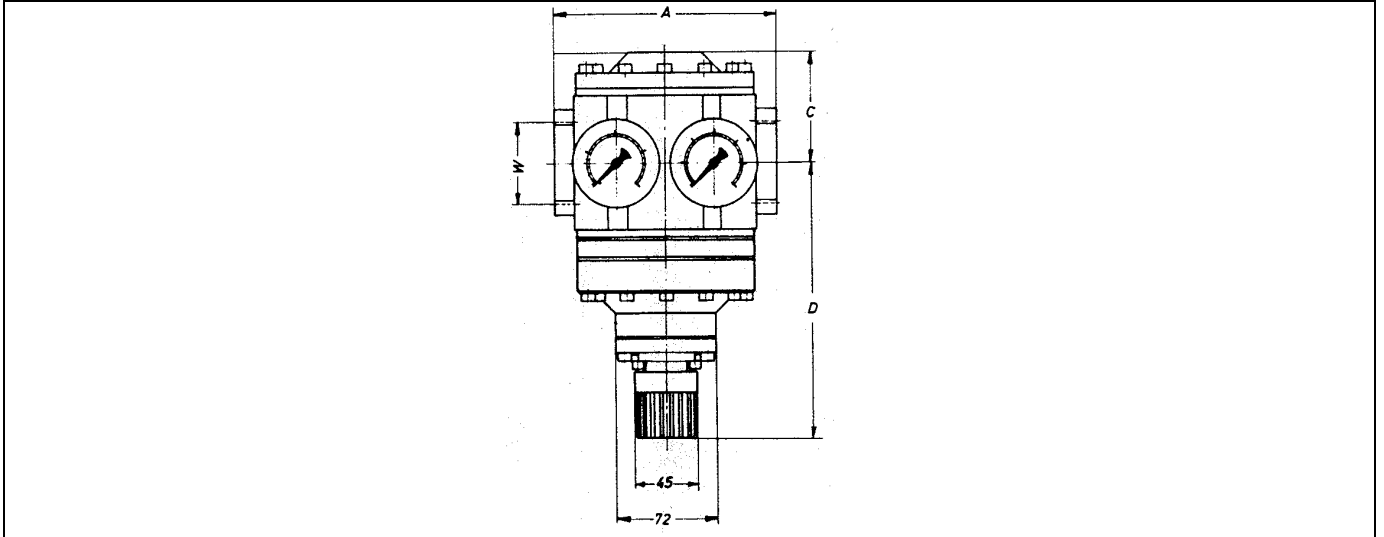
Important: Filter Art. No. «680.27» (Section 1) should be connected upstream!

Materials

Part	Material
Head piece (body)	Al
Spring bonnet/adjusting screw (pilot)	Zinc - Z 410/brass
Diaphragms	NBR-brass
Pressure spring	Galvanised steel
Valve cone	NBR-brass
Counter-pressure spring	Stainless steel
O-rings	NBR

Main spare parts

Part	Article No.	Ident No.
→ Set of wearing parts	22.686.4	101146
Pr. gauge Ø63, G 1/4		
0 to 6 bar	216-KD	101224
0 to 10 bar	217-KD	101244
0 to 16 bar	218-KD	101398
0 to 25 bar	219-KD	101462
0 to 40 bar	220	101842

Dimensions

Dimensions [mm]

Port W	Dimensions				Adj. knob \varnothing	Pr. gauge	
	A	C	D	\varnothing		\varnothing	
G 2	160	78	168		45	G 1/4	63
G 1½ (red.)	180	78	168		45	G 1/4	63

Flow rates

 Flow rates at $p_1 = 10$ bar, $p_2 = 8$ bar and pressure drop $\Delta p = 1$ bar

Output pressure $p_2 =$ [bar]		8
Nominal flow ($\Delta p = 1$ bar)	QN m ³ /h	2880
	QN l/min	48000