



Pressure regulating valve

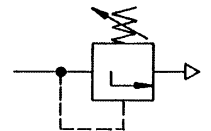
Size 0

Water applications

G 1/4

484.03 to 484.10

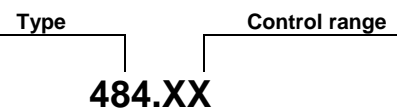
0.1 to 3.0 bar
0.2 to 6.0 bar
0.5 to 10.0 bar
0.5 to 16.0 bar*



Characteristics

Type	484.XX
Port	G 1/4 (G 1/8 on request)
Pressure gauge port	G 1/8
Medium	Water, compressed air, non-corrosive gases
Type of construction	Diaphragm pressure regulator with non-self-relieving design
Mounting position	Any
Input pressure p ₁	Max. 25 bar
Control range p ₂	0.1 to 3.0 bar, 0.2 to 6.0 bar, 0.5 to 10.0 bar 0.5 to 16.0 bar* on request
Temperature Ambient / medium	3 to 60 °C
Mounting type	In-line, bracket kit Panel mounting, cutout Ø30.5
Weight [g]	200

Ordering information



Output pressure	
XX=	Control range
03	0.1 to 3.0 bar
06	0.2 to 6.0 bar
10	0.5 to 10.0 bar
--	0.5 to 16.0 bar*

Operation

- Push-to-lock adjusting knob
Bar
- Pressure gauge included

Materials

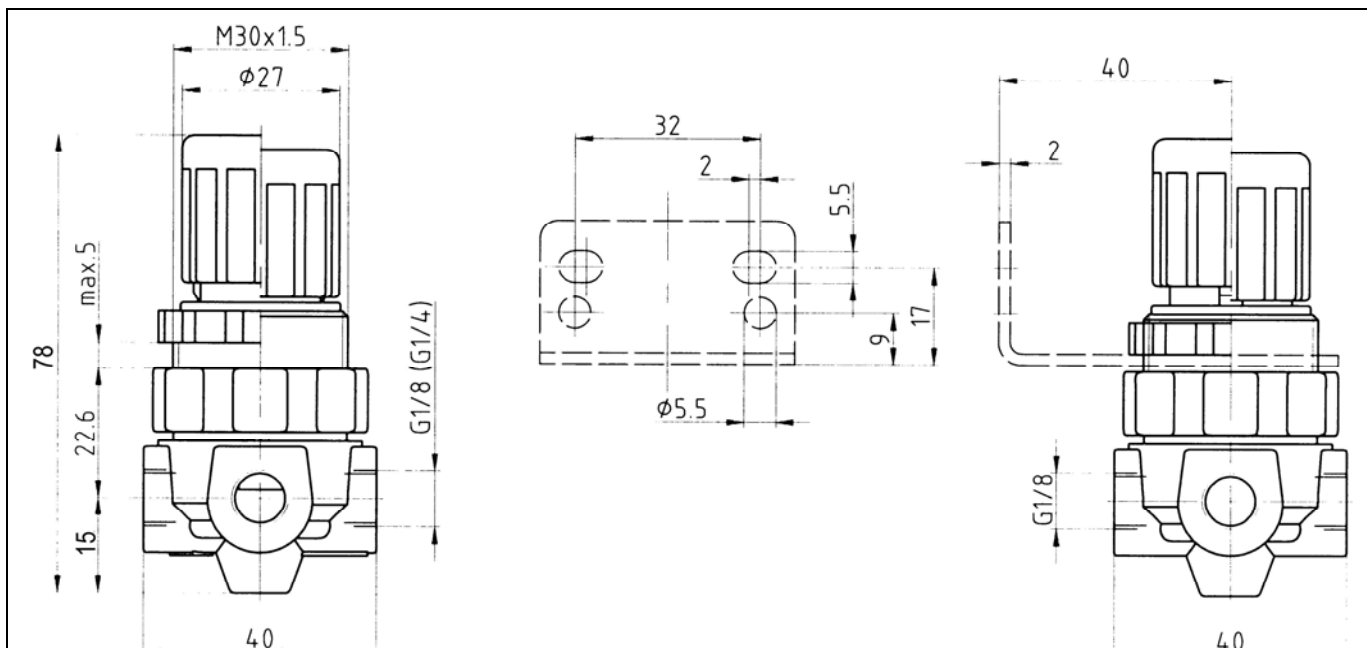
Designation	Material
Head piece	Brass
Spring bonnet	POM-brass
Diaphragm	NBR-brass
Valve cone	NBR-brass
Valve seat	Brass
Pressure spring	Galvanised steel
O-ring 9.5 x 1.6	NBR
Counter-pressure spring	Stainless steel

Applications

All applications where a given water pressure must be adapted to a specific application.

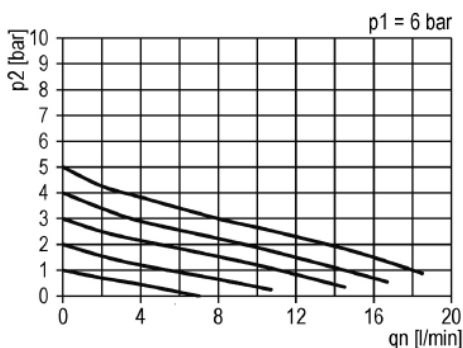
A filter should always be connected upstream

Dimensions [mm]



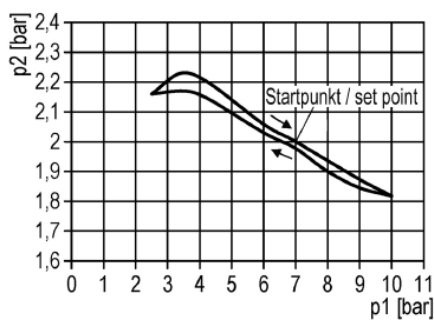
Flow characteristic

Medium: Water



Hysteresis

Medium: Water



Accessories

Designation	Part No.
- Nut M 30 x 1.5	R 11-55
- Mounting bracket with nut R 11-55	MV 30

Main spare parts

Designation	Part No.
Repair kit, compl.	22.484.4
- Diaphragm	
- Valve cone	
- O-ring 9.5 x 1.6	

Applications with water

Scale or contaminated water cause malfunctions. Statutory warranty claims can only be accepted if the defect is the fault of the manufacturer.