

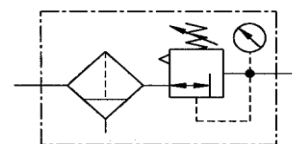


## Filter regulators

Size 1

**C 11**  
G 1/4

**C 12**  
G 3/8

 1.1 to 3 bar  
1.2 to 6 bar  
0.5 to 10 bar  
0.5 to 16 bar


### Characteristics

Type	C 11	C 12
Port	G 1/4	G 3/8
Pressure gauge port	G 1/4	
Type of construction	Diaphragm pressure regulator with self-relieving design Centrifugal filter Sintered filter element  <b>Special versions on request e.g. -</b> Reverse flow port closed	
Input pressure p1	16 bar with plastic bowl 20 bar with metal bowl	
Input pressure p1 with fully-automatic drain	Max. 16 bar Min. 1.5 bar	
Control range p2	0.1 to 3 bar / 0.2 to 6 bar 0.5 to 10 bar / 0.5 to 16 bar	
Mounting position	Vertical, drain plug at bottom	
Mounting type	Bracket and nut, hole $\varnothing$ 30.5 mm Bracket or two through	
Medium temperature Ambient	-10 to 60 °C (other temperature ranges on request)	
Filter rating	5 $\mu$	
Bowl capacity	Max. 25 cm <sup>3</sup> condensate	
Condensate drain	Semi-automatic Fully-automatic on request	
Weight [g]	392 / 477 with pressure gauge	

### Ordering information

Type Port Options Output press.


**C XX - X X**
**Order example: C 11-K 10-HA**

Port	
11	G 1/4
12	G 3/8
Options	
<b>K-HA</b>	Plastic bowl
<b>M-SR</b>	Metal bowl with sight glass
<b>S</b>	Bowl guard

**Please use the suffix**

### Description

- Block design
- Simple block mounting with other devices using conical clamps and half threads
- Joiner sets (**KP 11**) required for block mounting
- Pressure setting can be locked by pushing the knob down
- Flow direction indicated by arrows
- **Entry in direction of arrow**
- **Independent of inlet pressure**
- Pressure gauge  $\varnothing$  40 mm included
- Pressure gauge can be mounted at both ends
- Lockable adjusting knob (**on request**)
- Filter rating acc. to ISO 4003, glass bead test
- Bowl guard can be retrofitted without tools

### Main spare parts

Part	Part No.
→ Set of wearing parts - Diaphragm, cmpl.  - Valve cone, cmpl.	<b>22.1811.4</b>
Pr. gauge $\varnothing$ 40 mm, G1/4	
0 to 4 bar	110.01-KD
0 to 6 bar	110.02-KD
0 to 10 bar	110.03-KD
0 to 16 bar	110.04-KD

### Materials

Part	Material
Head piece (body)	Z 410
Spring bonnet	POM-brass
Diaphragm	→ NBR-brass
Pressure spring	Galvanised steel
Valve cone	→ NBR-brass
Counter-pressure spring	→ Stainless steel
O-ring 30 x 2	NBR
Spring bonnet, lockable	POM-AI
Lock cylinder	Brass
Filter element 5 $\mu$ m	PE
Condensate bowl	Polycarbonate
Baffle	PA

